

WALMART JOE MARTIN STAGE RACE

STAGE 1 RESULTS

WOMEN ELITE • MAY 18, 2023



DEVIL'S DEN ROAD RACE

JoeMartinStageRace.com

Walmart 


JOE MARTIN
STAGE RACE



Communiqué 3

18-05-2023

2023 JOE MARTIN STAGE RACE - ELITE WOMEN 2.2 STAGE ONE

DECISION

2.12.007 (8.3)	Littering - disposable of water bottle outside of green zone (1st infringement) Fine of 100 CHF and loss of 5 UCI points to the following rider:		
162 PARKER, Rachel		AMY D FOUNDATION	101 368 086 79
2.12.007 (6.3)	Breach of regulations or guidelines concerning vehicle movements during the race or failure to comply with the instructions of commissaires and/or the organisation. Fine of 100 CHF.		
DS GILLARD, Christine		PRIMEAU VELO RACING TEAM	100 563 733 50
DS RENKEMA, Ben		GOLDMAN SACHS EFTS RACING	100 773 259 56
2.12.007 (4.9)	Follower leaning out of a vehicle or holding equipment outside a vehicle Fine of 100 CHF		
DS CARLSON, Chris		UNITED CYCLING	100 071 856 60

ANNOUNCEMENT

Time cut has been adjusted to 18% following consultation with the Race Director.

Riders caught in the crash at 2.5km to go were credited with the same time as the main field, namely 2:57:51.

REMINDERS

CHANGE: For Stage 2, the location of the first feedzone is changing. It will now be located at km 56, just after the QOM. This location will also be used by the Men's field.

At the end of Stage 2 all caravan and team car drivers are asked not to park in the parking area immediately after the finish line. Please

**ARKANSAS TOURISM DEVIL'S DEN ROAD RACE
WOMEN ELITE • MAY 18, 2023**

HONORS

05/18/2023 | Fayetteville - Fayetteville

STAGE RESULTS			
Stage Winner	61	Skylar SCHNEIDER	XLA
Best Team	-	VIRGINIA'S BLUE RIDGE TWENTY24	T24

LEADERS			
General Classification		61	Skylar SCHNEIDER XLA
Points Classification		61	Skylar SCHNEIDER XLA
	Wearer:	171	Marlies MEJIAS GARCIA T24
Mountain Classification		61	Skylar SCHNEIDER XLA
	Wearer:	46	Emilie FORTIN CYN
Young Rider Classification		16	Sarah VAN DAM DNA
Team General Classification		-	VIRGINIA'S BLUE RIDGE TWENTY24 T24

Timing / Data Processing / Photo-finish / GPS tracking | Race Day Systems

ARKANSAS TOURISM DEVIL'S DEN ROAD RACE

WOMEN ELITE • MAY 18, 2023

RESULTS

05/18/2023 | Fayetteville - Fayetteville

Average speed: 36.84 km/h
Distance: 109.2 km

Organizer: All Sports Productions
Time limit (18%): 3h29'51"

Rk.	Bib	Name	Team	Nat.	B/P	Gap	Rk.	Bib	Name	Team	Nat.	B/P	Gap
1.	61	Skylar SCHNEIDER	XLA	USA	-13	2h57'51"	56.	107	Danielle RAVNIKAR	XCC	USA		+0"
2.	16	Sarah VAN DAM*	DNA	CAN	-6	"	57.	114	Hayley WICKSTROM	XQM	USA		+0"
3.	171	Marlies MEJIAS GARCIA	T24	CUB	-4	"	58.	83	Daniely Del Valle GARCIA BUITRAGO	XMN	VEN		+0"
4.	121	Leah KIRCHMAN	XDD	CAN		"	59.	132	Regina LEGGE	XCE	USA		+0"
5.	172	Emily EHRlich	T24	USA		"	60.	113	Rachel JORDAN	XQM	USA		+0"
6.	11	Shayna POWLESS	DNA	USA		"	61.	191	Anna DOROVSKIKH	XOR	USA		+0"
7.	25	Ariane BONHOMME	ROX	CAN		"	62.	161	Maria Monserrat CAMARGO SANTACANA	XAD	MEX		+0"
8.	41	Greta RICHIOUD	CYN	FRA		"	63.	91	Katherine SEILER*	XCA	USA		+0"
9.	2	Lauren STEPHENS	TIB	USA	-2	"	64.	166	Claudia FERREIRA	XAD	USA		+0"
10.	51	Camille PRIMEAU*	PVR	CAN		"	65.	195	Marien LAWSON*	XOR	CAN		+0"
11.	81	Andrea BUTTINE	XMN	USA		"	66.	124	Erica ZAVETA	XDD	USA		+0"
12.	34	Cassidy HICKEY*	ILP	USA		"	67.	127	Ava HACHMANN	XDD	USA		+0"
13.	84	Taylor KUYK-WHITE	XMN	USA		"	68.	175	Jennifer VALENTE	T24	USA		+0"
14.	144	Alia SHAFI	XFC	USA		"	69.	22	Nadia GONTOVA	ROX	CAN		+0"
15.	174	Sofia ARREOLA NAVARRO	T24	MEX		"	70.	185	Jenna NESTMAN	XGS	CAN		+0"
16.	54	Coralie LEVESQUE*	PVR	CAN		"	71.	93	Betty HASSE*	XCA	USA		+0"
17.	112	Galen BOLARD	XQM	USA	-1	"	72.	31	Helena CONEY	ILP	CAN		+0"
18.	33	Brenna WRYE-SIMPSON	ILP	USA		"	73.	163	Stephanie HALAMEK	XAD	USA		+0"
19.	94	Natalie QUINN*	XCA	USA		"	74.	143	Sofia SCHUGAR	XFC	USA		+0"
20.	21	Maeghan EASLER	ROX	USA		"	75.	82	Andrea CYR	XMN	USA		+4'41"
21.	46	Emilie FORTIN	CYN	CAN		"	76.	65	Caitlin HOWELL	XLA	USA		"
22.	47	Claire WINDSOR	CYN	USA		"	77.	167	Rachel RUBINO	XAD	USA		"
23.	14	Diana Carolina PEÑUELA MARTINEZ	DNA	COL		"	78.	92	Elizabeth GUNSALUS*	XCA	USA		"
24.	27	Marjie BEMIS	ROX	USA		"	79.	17	Olivia CUMMINS*	DNA	USA		"
25.	3	Sara POIDEVIN	TIB	CAN		"	80.	4	Elizabeth BANKS	TIB	GBR		"
26.	42	Pauline ALLIN	CYN	FRA		"	81.	184	Elizabeth Katia MARTINEZ MIÑARRO*	XGS	MEX		"
27.	5	Clara HONSINGER	TIB	USA		"	82.	133	Raylyn NUSS	XCE	USA		+0"
28.	26	Romina HINOJOSA CRUZ*	ROX	MEX		"	83.	102	Morgan STERN	XCC	USA		+0"
29.	24	Emily NEWSOM	ROX	USA		"	84.	44	Anna HICKS	CYN	USA		+0"
30.	63	Renee Julyn AGUILA HERNANDEZ	XLA	MEX		"	85.	72	Sarah SCHUETTER	XUC	USA		+7'31"
31.	176	Melisa ROLLINS	T24	USA		"	86.	141	Marjorie RINALDO	XFC	USA		+10'51"
32.	15	Holly BRECK	DNA	USA		"	87.	165	Katherine LIN	XAD	USA		+10'52"
33.	13	Anet BARRERA ESPARZA	DNA	MEX		"	88.	115	Leah THORVILSON	XQM	USA		"
34.	146	Amy GAMMELGARD	XFC	USA		"	89.	164	Keira BOND*	XAD	USA		+10'54"
35.	56	Lilly UJFALUSI*	PVR	CAN		"	90.	77	Zoe CLAY	XUC	USA		+10'57"
36.	85	Jeydy PRADERA BERNAL	XMN	CUB		"	91.	194	Erika WILSON	XOR	USA		+10'58"
37.	71	Kathryn AMAN	XUC	USA		"	92.	75	Staci MCCUDDEN*	XUC	AUS		+11'46"
38.	1	Emma LANGLEY	TIB	USA		"	93.	55	Iris GABELIER*	PVR	CAN		+19'58"
39.	134	Chloe PATRICK*	XCE	USA		"	94.	57	Isla WALKER*	PVR	CAN		"
40.	131	Samantha SCOTT*	XCE	USA		"	95.	183	Justine THOMAS*	XGS	CAN		"
41.	95	Katherine RUSCH	XCA	USA		"	96.	162	Rachel PARKER	XAD	USA		+20'29"
42.	23	Emily MARCOLINI	ROX	CAN		"	97.	192	Cheyenne NOBLE	XOR	USA		+20'31"
43.	76	Caitlin CONYERS	XUC	BER		"	98.	136	Meredith MORAN	XCE	USA		+20'32"
44.	62	Samantha SCHNEIDER	XLA	USA	+0"	"	99.	105	Leigh DUKEMAN	XCC	USA		"
45.	12	Rachel LANGDON	DNA	GBR	+0"	"	100.	135	Lauren ZOERNER*	XCE	USA		+23'48"
46.	153	Madeline LEBRETON*	XCY	CAN	+0"	"	101.	126	Elizabeth HARDEN*	XDD	USA		"
47.	101	Florence HOWDEN	XCC	USA	+0"	"	102.	64	Aubrey DRUMMOND*	XLA	USA		+23'50"
48.	45	Jessica CYGAN	CYN	USA	+0"	"	103.	53	Lucy HEMPSTEAD*	PVR	CAN		+26'58"
49.	43	Ashley FRYE	CYN	USA	+0"	"	104.	152	Whitney SURGENOR	XCY	CAN		+29'08"
50.	156	Skyler GOUDSWAARD	XCY	CAN	+0"	"	105.	35	Kara LILLY	ILP	CAN		+29'10"
51.	154	Taylor TOMPKINS*	XCY	CAN	+0"	"	106.	103	Myriam PAQUET	XCC	CAN		+31'57"
52.	73	Hannah DALRING	XUC	USA	+0"	"	OTL	106	Clara BROWN	XCC	USA		"
53.	74	Mallory MACROSTIE	XUC	USA	+0"	"	OTL	116	Amanda BRANDYBERRY	XQM	USA		"
54.	173	Laurel QUINONES	T24	USA	+0"	"	OTL	181	Jane TULLIS*	XGS	USA		"
55.	111	Stefania SYDLIK	XQM	USA	+0"	"	DNF	36	Holly HENRY	ILP	CAN		"

Timing / Data Processing / Photo-finish / GPS tracking | Race Day Systems

ARKANSAS TOURISM DEVIL'S DEN ROAD RACE WOMEN ELITE • MAY 18, 2023

RESULTS

05/18/2023 | Fayetteville - Fayetteville

Average speed: 36.84 km/h
Distance: 109.2 km

Organizer: All Sports Productions
Time limit (18%): 3h29'51"

Rk.	Bib	Name	Team	Nat.	B/P	Gap	Rk.	Bib	Name	Team	Nat.	B/P	Gap
DNF	37	Cassandra NELSON	ILP	USA									
DNF	52	Penelope PRIMEAU*	PVR	CAN									
DNF	151	Annie SCOTT*	XCY	CAN									
DNF	182	Megan POULIN	XGS	CAN									
DNF	193	Catherine GUENTERT	XOR	USA									
DNS	125	Hayley BATES	XDD	USA									
DNS	145	Jennifer WHEELER	XFC	USA									

Did not start: 2
Out of time limit: 3
Disqualified: 0
Did not finish: 6

Timing / Data Processing / Photo-finish / GPS tracking | Race Day Systems

ARKANSAS TOURISM DEVIL'S DEN ROAD RACE

WOMEN ELITE • MAY 18, 2023

GENERAL CLASSIFICATION

05/18/2023 | Fayetteville - Fayetteville

Average speed: 36.84 km/h

Total distance: 109.2 km

Rk.	Bib	Name	Team	Nat.	Gap	Rk.	Bib	Name	Team	Nat.	Gap
1.	61	Skylar SCHNEIDER	XLA	USA	2h57'38"	56.	107	Danielle RAVNIKAR	XCC	USA	"
2.	16	Sarah VAN DAM*	DNA	CAN	+7"	57.	114	Hayley WICKSTROM	XQM	USA	"
3.	171	Marlies MEJIAS GARCIA	T24	CUB	+9"	58.	83	Daniely Del Valle GARCIA BUITRAGO	XMN	VEN	"
4.	2	Lauren STEPHENS	TIB	USA	+11"	59.	132	Regina LEGGE	XCE	USA	"
5.	112	Galen BOLARD	XQM	USA	+12"	60.	113	Rachel JORDAN	XQM	USA	"
6.	121	Leah KIRCHMANN	XDD	CAN	+13"	61.	191	Anna DOROVSKIKH	XOR	USA	"
7.	172	Emily EHRlich	T24	USA	"	62.	161	Maria Monserrat CAMARGO SANTACANA	XAD	MEX	"
8.	11	Shayna POWLESS	DNA	USA	"	63.	91	Katherine SEILER*	XCA	USA	"
9.	25	Ariane BONHOMME	ROX	CAN	"	64.	166	Claudia FERREIRA	XAD	USA	"
10.	41	Greta RICHIOUD	CYN	FRA	"	65.	195	Mairen LAWSON*	XOR	CAN	"
11.	51	Camille PRIMEAU*	PVR	CAN	"	66.	124	Erica ZAVETA	XDD	USA	"
12.	81	Andrea BUTTINE	XMN	USA	"	67.	127	Ava HACHMANN	XDD	USA	"
13.	34	Cassidy HICKEY*	ILP	USA	"	68.	175	Jennifer VALENTE	T24	USA	"
14.	84	Taylor KUYK-WHITE	XMN	USA	"	69.	22	Nadia GONTOVA	ROX	CAN	"
15.	144	Alia SHAFI	XFC	USA	"	70.	185	Jenna NESTMAN	XGS	CAN	"
16.	174	Sofia ARREOLA NAVARRO	T24	MEX	"	71.	93	Betty HASSE*	XCA	USA	"
17.	54	Coralie LEVESQUE*	PVR	CAN	"	72.	31	Helena CONEY	ILP	CAN	"
18.	33	Brenna WRYE-SIMPSON	ILP	USA	"	73.	163	Stephanie HALAMEK	XAD	USA	"
19.	94	Natalie QUINN*	XCA	USA	"	74.	143	Sofia SCHUGAR	XFC	USA	"
20.	21	Maeghan EASLER	ROX	USA	"	75.	133	Raylyn NUSS	XCE	USA	"
21.	46	Emilie FORTIN	CYN	CAN	"	76.	102	Morgan STERN	XCC	USA	"
22.	47	Claire WINDSOR	CYN	USA	"	77.	44	Anna HICKS	CYN	USA	"
23.	14	Diana Carolina PEÑUELA MARTINEZ	DNA	COL	"	78.	82	Andrea CYR	XMN	USA	+4'54"
24.	27	Marjie BEMIS	ROX	USA	"	79.	65	Caitlin HOWELL	XLA	USA	"
25.	3	Sara POIDEVIN	TIB	CAN	"	80.	167	Rachel RUBINO	XAD	USA	"
26.	42	Pauline ALLIN	CYN	FRA	"	81.	92	Elizabeth GUNSALUS*	XCA	USA	"
27.	5	Clara HONSINGER	TIB	USA	"	82.	17	Olivia CUMMINS*	DNA	USA	"
28.	26	Romina HINOJOSA CRUZ*	ROX	MEX	"	83.	4	Elizabeth BANKS	TIB	GBR	"
29.	24	Emily NEWSOM	ROX	USA	"	84.	184	Elizabeth Katia MARTINEZ MIÑARRO*	XGS	MEX	"
30.	63	Renee Julyn AGUILA HERNANDEZ	XLA	MEX	"	85.	72	Sarah SCHUETTER	XUC	USA	+7'44"
31.	176	Melisa ROLLINS	T24	USA	"	86.	141	Marjorie RINALDO	XFC	USA	+11'04"
32.	15	Holly BRECK	DNA	USA	"	87.	165	Katherine LIN	XAD	USA	+11'05"
33.	13	Anet BARRERA ESPARZA	DNA	MEX	"	88.	115	Leah THORVILSON	XQM	USA	"
34.	146	Amy GAMMELGARD	XFC	USA	"	89.	164	Keira BOND*	XAD	USA	+11'07"
35.	56	Lilly UJFALUSI*	PVR	CAN	"	90.	77	Zoe CLAY	XUC	USA	+11'10"
36.	85	Jeydy PRADERA BERNAL	XMN	CUB	"	91.	194	Erika WILSON	XOR	USA	+11'11"
37.	71	Kathryn AMAN	XUC	USA	"	92.	75	Staci MCCUDDEN*	XUC	AUS	+11'59"
38.	1	Emma LANGLEY	TIB	USA	"	93.	55	Iris GABELIER*	PVR	CAN	+20'11"
39.	134	Chloe PATRICK*	XCE	USA	"	94.	57	Isla WALKER*	PVR	CAN	"
40.	131	Samantha SCOTT*	XCE	USA	"	95.	183	Justine THOMAS*	XGS	CAN	"
41.	95	Katherine RUSCH	XCA	USA	"	96.	162	Rachel PARKER	XAD	USA	+20'42"
42.	23	Emily MARCOLINI	ROX	CAN	"	97.	192	Cheyenne NOBLE	XOR	USA	+20'44"
43.	76	Caitlin CONYERS	XUC	BER	"	98.	136	Meredith MORAN	XCE	USA	+20'45"
44.	62	Samantha SCHNEIDER	XLA	USA	"	99.	105	Leigh DUKEMAN	XCC	USA	"
45.	12	Rachel LANGDON	DNA	GBR	"	100.	135	Lauren ZOERNER*	XCE	USA	+24'01"
46.	153	Madeline LEBRETON*	XCY	CAN	"	101.	126	Elizabeth HARDEN*	XDD	USA	"
47.	101	Florence HOWDEN	XCC	USA	"	102.	64	Aubrey DRUMMOND*	XLA	USA	+24'03"
48.	45	Jessica CYGAN	CYN	USA	"	103.	53	Lucy HEMPSTEAD*	PVR	CAN	+27'11"
49.	43	Ashley FRYE	CYN	USA	"	104.	152	Whitney SURGENOR	XCY	CAN	+29'21"
50.	156	Skyler GOUDSWAARD	XCY	CAN	"	105.	35	Kara LILLY	ILP	CAN	+29'23"
51.	154	Taylor TOMPKINS*	XCY	CAN	"	106.	103	Myriam PAQUET	XCC	CAN	+32'10"
52.	73	Hannah DALRING	XUC	USA	"						
53.	74	Mallory MACROSTIE	XUC	USA	"						
54.	173	Laurel QUINONES	T24	USA	"						
55.	111	Stefanie SYDLIK	XQM	USA	"						

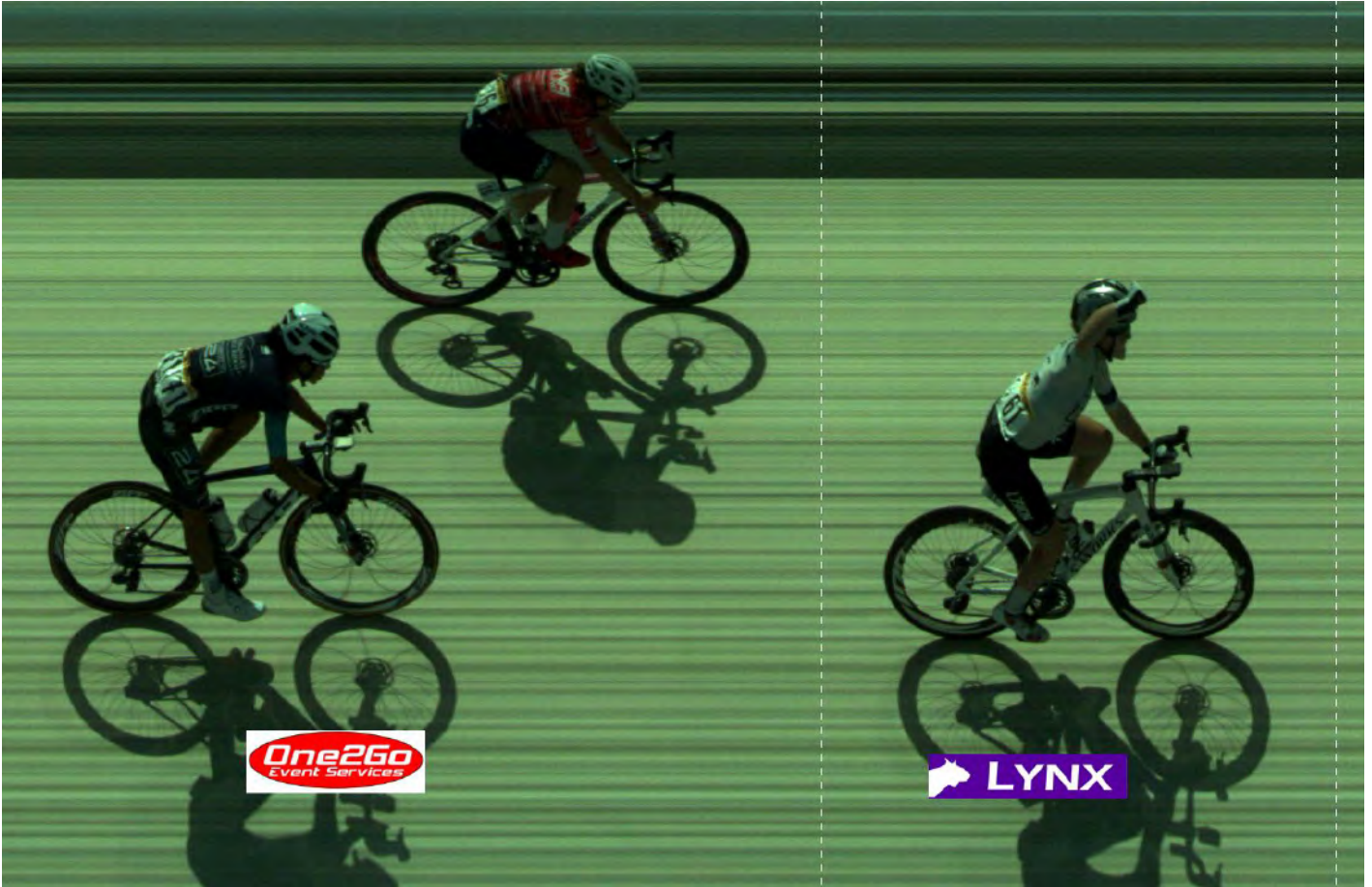
Timing / Data Processing / Photo-finish / GPS tracking | Race Day Systems

ARKANSAS TOURISM DEVIL'S DEN ROAD RACE
WOMEN ELITE • MAY 18, 2023

PHOTO FINISH

05/18/2023 | Fayetteville - Fayetteville

Stage Winner: Skylar SCHNEIDER (XLA)



Timing / Data Processing / Photo-finish / GPS tracking | Race Day Systems

ARKANSAS TOURISM DEVIL'S DEN ROAD RACE WOMEN ELITE • MAY 18, 2023

POINTS CLASSIFICATION

05/18/2023 | Fayetteville - Fayetteville

Rk.	Bib	Name	Team	Nat.	Pts	Rk.	Bib	Name	Team	Nat.	Pts
HWY 71 Inter. Sprint - 71.2km						Overall Points Classification after Stage 1					
1.	61	Skylar SCHNEIDER	XLA	USA	5 pt	1.	61	Skylar SCHNEIDER	XLA	USA	20 pt
2.	2	Lauren STEPHENS	TIB	USA	3 pt	2.	16	Sarah VAN DAM	DNA	CAN	12 pt
3.	112	Galen BOLARD	XQM	USA	1 pt	3.	171	Marlies MEJIAS GARCIA	T24	CUB	10 pt

4.	121	Leah KIRCHMAN	XDD	CAN	7 pt	4.	121	Leah KIRCHMAN	XDD	CAN	7 pt
5.	172	Emily EHRlich	T24	USA	6 pt	5.	172	Emily EHRlich	T24	USA	6 pt
6.	2	Lauren STEPHENS	TIB	USA	5 pt	6.	2	Lauren STEPHENS	TIB	USA	5 pt
7.	11	Shayna POWLESS	DNA	USA	5 pt	7.	11	Shayna POWLESS	DNA	USA	5 pt
8.	25	Ariane BONHOMME	ROX	CAN	4 pt	8.	25	Ariane BONHOMME	ROX	CAN	4 pt
9.	41	Greta RICHIOUD	CYN	FRA	3 pt	9.	41	Greta RICHIOUD	CYN	FRA	3 pt
10.	112	Galen BOLARD	XQM	USA	1 pt	10.	112	Galen BOLARD	XQM	USA	1 pt
						11.	51	Camille PRIMEAU	PVR	CAN	1 pt

Fayetteville - Finish line					
1.	61	Skylar SCHNEIDER	XLA	USA	15 pt
2.	16	Sarah VAN DAM	DNA	CAN	12 pt
3.	171	Marlies MEJIAS GARCIA	T24	CUB	10 pt
4.	121	Leah KIRCHMAN	XDD	CAN	7 pt
5.	172	Emily EHRlich	T24	USA	6 pt
6.	11	Shayna POWLESS	DNA	USA	5 pt
7.	25	Ariane BONHOMME	ROX	CAN	4 pt
8.	41	Greta RICHIOUD	CYN	FRA	3 pt
9.	2	Lauren STEPHENS	TIB	USA	2 pt
10.	51	Camille PRIMEAU	PVR	CAN	1 pt

Timing / Data Processing / Photo-finish / GPS tracking | Race Day Systems

ARKANSAS TOURISM DEVIL'S DEN ROAD RACE
WOMEN ELITE • MAY 18, 2023

MOUNTAIN CLASSIFICATION

05/18/2023 | Fayetteville - Fayetteville

Rk.	Bib	Name	Team	Nat.	Pts	Rk.	Bib	Name	Team	Nat.	Pts
HWY 170 Int. QOM - 45.2km (Cat. 2)						Overall Mountain Classification after Stage 1					
1.	61	Skylar SCHNEIDER	XLA	USA	3 pt	1.	61	Skylar SCHNEIDER	XLA	USA	3 pt
2.	46	Emilie FORTIN	CYN	CAN	2 pt	2.	46	Emilie FORTIN	CYN	CAN	2 pt
3.	144	Alia SHAFI	XFC	USA	1 pt	3.	144	Alia SHAFI	XFC	USA	1 pt

Timing / Data Processing / Photo-finish / GPS tracking | Race Day Systems

ARKANSAS TOURISM DEVIL'S DEN ROAD RACE WOMEN ELITE • MAY 18, 2023

YOUNG RIDER CLASSIFICATION

05/18/2023 | Fayetteville - Fayetteville

Rk.	Bib	Name	Team	Nat.	B	Gap	Rk.	Bib	Name	Team	Nat.	Gap
Young Rider Classification Stage 1						Overall Young Rider Classification after Stage 1						
1.	16	Sarah VAN DAM	DNA	CAN	-6	2h57'51"	1.	16	Sarah VAN DAM	DNA	CAN	2h57'45"
2.	51	Camille PRIMEAU	PVR	CAN		+0"	2.	51	Camille PRIMEAU	PVR	CAN	+6"
3.	34	Cassidy HICKEY	ILP	USA		+0"	3.	34	Cassidy HICKEY	ILP	USA	+6"
4.	54	Coralie LEVESQUE	PVR	CAN		+0"	4.	54	Coralie LEVESQUE	PVR	CAN	+6"
5.	94	Natalie QUINN	XCA	USA		+0"	5.	94	Natalie QUINN	XCA	USA	+6"
6.	26	Romina HINOJOSA CRUZ	ROX	MEX		+0"	6.	26	Romina HINOJOSA CRUZ	ROX	MEX	+6"
7.	56	Lilly UJFALUSI	PVR	CAN		+0"	7.	56	Lilly UJFALUSI	PVR	CAN	+6"
8.	134	Chloe PATRICK	XCE	USA		+0"	8.	134	Chloe PATRICK	XCE	USA	+6"
9.	131	Samantha SCOTT	XCE	USA		+0"	9.	131	Samantha SCOTT	XCE	USA	+6"
10.	153	Madeline LEBRETON	XCY	CAN		+0"	10.	153	Madeline LEBRETON	XCY	CAN	+6"
11.	154	Taylor TOMPKINS	XCY	CAN		+0"	11.	154	Taylor TOMPKINS	XCY	CAN	+6"
12.	91	Katherine SEILER	XCA	USA		+0"	12.	91	Katherine SEILER	XCA	USA	+6"
13.	195	Marien LAWSON	XOR	CAN		+0"	13.	195	Marien LAWSON	XOR	CAN	+6"
14.	93	Betty HASSE	XCA	USA		+0"	14.	93	Betty HASSE	XCA	USA	+6"
15.	92	Elizabeth GUNSALUS	XCA	USA		+4'41"	15.	92	Elizabeth GUNSALUS	XCA	USA	+4'47"
16.	17	Olivia CUMMINS	DNA	USA		+4'41"	16.	17	Olivia CUMMINS	DNA	USA	+4'47"
17.	184	Elizabeth Katia MARTINEZ MIÑARRO	XGS	MEX		+4'41"	17.	184	Elizabeth Katia MARTINEZ MIÑARRO	XGS	MEX	+4'47"
18.	164	Keira BOND	XAD	USA		+10'54"	18.	164	Keira BOND	XAD	USA	+11'00"
19.	75	Staci MCCUDDEN	XUC	AUS		+11'46"	19.	75	Staci MCCUDDEN	XUC	AUS	+11'52"
20.	55	Iris GABELIER	PVR	CAN		+19'58"	20.	55	Iris GABELIER	PVR	CAN	+20'04"
21.	57	Isla WALKER	PVR	CAN		+19'58"	21.	57	Isla WALKER	PVR	CAN	+20'04"
22.	183	Justine THOMAS	XGS	CAN		+19'58"	22.	183	Justine THOMAS	XGS	CAN	+20'04"
23.	135	Lauren ZOERNER	XCE	USA		+23'48"	23.	135	Lauren ZOERNER	XCE	USA	+23'54"
24.	126	Elizabeth HARDEN	XDD	USA		+23'48"	24.	126	Elizabeth HARDEN	XDD	USA	+23'54"
25.	64	Aubrey DRUMMOND	XLA	USA		+23'50"	25.	64	Aubrey DRUMMOND	XLA	USA	+23'56"
26.	53	Lucy HEMPSTEAD	PVR	CAN		+26'58"	26.	53	Lucy HEMPSTEAD	PVR	CAN	+27'04"

Timing / Data Processing / Photo-finish / GPS tracking | Race Day Systems

ARKANSAS TOURISM DEVIL'S DEN ROAD RACE WOMEN ELITE • MAY 18, 2023

TEAM RESULTS

05/18/2023 | Fayetteville - Fayetteville

Rk.	Team	Time	Gap	Rk.	Team	Time	Gap		
Team Results Stage 1				Overall Team Classification after Stage 1					
1.	T24	VIRGINIA'S BLUE RIDGE TWENTY24	8h53'33"	-	1.	T24	VIRGINIA'S BLUE RIDGE TWENTY24	8h53'33"	-
2.	DNA	DNA PRO CYCLING	8h53'33"	+0"	2.	DNA	DNA PRO CYCLING	8h53'33"	+0"
3.	ROX	ROXO RACING	8h53'33"	+0"	3.	ROX	ROXO RACING	8h53'33"	+0"
4.	CYN	CYNISCA CYCLING	8h53'33"	+0"	4.	CYN	CYNISCA CYCLING	8h53'33"	+0"
5.	XMN	MIAMI NIGHTS	8h53'33"	+0"	5.	XMN	MIAMI NIGHTS	8h53'33"	+0"
6.	TIB	EF EDUCATION - TIBCO - SVB	8h53'33"	+0"	6.	TIB	EF EDUCATION - TIBCO - SVB	8h53'33"	+0"
7.	PVR	PRIMEAU VELO RACING TEAM	8h53'33"	+0"	7.	PVR	PRIMEAU VELO RACING TEAM	8h53'33"	+0"
8.	XLA	L39ION OF LOS ANGELES	8h53'33"	+0"	8.	XLA	L39ION OF LOS ANGELES	8h53'33"	+0"
9.	ILP	INSTAFUND RACING	8h53'33"	+0"	9.	ILP	INSTAFUND RACING	8h53'33"	+0"
10.	XFC	FOUNT CYCLING GUILD	8h53'33"	+0"	10.	XFC	FOUNT CYCLING GUILD	8h53'33"	+0"
11.	XCA	CCB - ALPINE CARBON P/B LLG	8h53'33"	+0"	11.	XCA	CCB - ALPINE CARBON P/B LLG	8h53'33"	+0"
12.	XQM	3T/Q+M CYCLING	8h53'33"	+0"	12.	XQM	3T/Q+M CYCLING	8h53'33"	+0"
13.	XUC	UNITED CYCLING	8h53'33"	+0"	13.	XUC	UNITED CYCLING	8h53'33"	+0"
14.	XDD	DENVER DISRUPTORS	8h53'33"	+0"	14.	XDD	DENVER DISRUPTORS	8h53'33"	+0"
15.	XCE	COMPETITIVE EDGE RACING	8h53'33"	+0"	15.	XCE	COMPETITIVE EDGE RACING	8h53'33"	+0"
16.	XCY	THE CYCLERY RACING	8h53'33"	+0"	16.	XCY	THE CYCLERY RACING	8h53'33"	+0"
17.	XCC	CARDINAL - CLASSIC CYCLING	8h53'33"	+0"	17.	XCC	CARDINAL - CLASSIC CYCLING	8h53'33"	+0"
18.	XAD	AMY D FOUNDATION	8h53'33"	+0"	18.	XAD	AMY D FOUNDATION	8h53'33"	+0"
19.	XOR	ORION RACING P/B BORAH TEAMWEAR	9h04'31"	+10'58"	19.	XOR	ORION RACING P/B BORAH TEAMWEAR	9h04'31"	+10'58"
20.	XGS	GOLDMAN SACHS EFTS RACING	9h18'12"	+24'39"	20.	XGS	GOLDMAN SACHS EFTS RACING	9h18'12"	+24'39"

Timing / Data Processing / Photo-finish / GPS tracking | Race Day Systems

MOUNT SEQUOYAH ROAD RACE
WOMEN ELITE • MAY 19, 2023

START LIST

05/19/2023 | Fayetteville - Devil's Den - Fayetteville

EF EDUCATION - TIBCO - SVB	TIB	UNITED CYCLING	XUC	FOUNT CYCLING GUILD	XFC
1 Emma LANGLEY	38. at 13"	71 Kathryn AMAN	37. at 13"	141 Marjorie RINALDO	86. at 11'04"
2 Lauren STEPHENS	4. at 11"	72 Sarah SCHUETTER	85. at 7'44"		
3 Sara POIDEVIN	25. at 13"	73 Hannah DALRING	52. at 13"	143 Sofia SCHUGAR	75. at 4'39"
4 Elizabeth BANKS	81. at 4'54"	74 Mallory MACROSTIE	53. at 13"	144 Alia SHAFI	15. at 13"
5 Clara HONSINGER	27. at 13"	75 Staci MCCUDDEN*	92. at 11'59"	145 Jennifer WHEELER	
		76 Caitlin CONYERS	43. at 13"	146 Amy GAMMELGARD	34. at 13"
		77 Zoe CLAY	90. at 11'10"		
DNA PRO CYCLING	DNA	MIAMI NIGHTS	XMN	THE CYCLERY RACING	XCY
11 Shayna POWLESS	8. at 13"	81 Andrea BUTTINE	12. at 13"	151 Annie SCOTT*	
12 Rachel LANGDON	45. at 13"	82 Andrea CYR	76. at 4'54"	152 Whitney SURGENOR	104. at 29'21"
13 Anet BARRERA ESPARZA	33. at 13"	83 Daniely Del Valle GARCIA BUITRAGO	58. at 13"	153 Madeline LEBRETON*	46. at 13"
14 Diana Carolina PEÑUELA MARTINEZ	23. at 13"	84 Taylor KUYK-WHITE	14. at 13"	154 Taylor TOMPKINS*	51. at 13"
15 Holly BRECK	32. at 13"	85 Jeydy PRADERA BERNAL	36. at 13"		
16 Sarah VAN DAM*	2. at 7"			156 Skyler GOUDSWAARD	50. at 13"
17 Olivia CUMMINS*	80. at 4'54"				
ROXO RACING	ROX	CCB - ALPINE CARBON P/B LIG	XCA	AMY D FOUNDATION	XAD
21 Maeghan EASLER	20. at 13"	91 Katherine SEILER*	63. at 13"	161 Maria Monserrat CAMARGO SANTACANA	62. at 13"
22 Nadia GONTOVA	69. at 13"	92 Elizabeth GUNSALUS*	79. at 4'54"	162 Rachel PARKER	96. at 20'42"
23 Emily MARCOLINI	42. at 13"	93 Betty HASSE*	71. at 13"	163 Stephanie HALAMEK	73. at 13"
24 Emily NEWSOM	29. at 13"	94 Natalie QUINN*	19. at 13"	164 Keira BOND*	89. at 11'07"
25 Ariane BONHOMME	9. at 13"	95 Katherine RUSCH	41. at 13"	165 Katherine LIN	87. at 11'05"
26 Romina HINOJOSA CRUZ*	28. at 13"			166 Claudia FERREIRA	64. at 13"
27 Marjie BEMIS	24. at 13"			167 Rachel RUBINO	78. at 4'54"
INSTAFUND RACING	ILP	CARDINAL - CLASSIC CYCLING	XCC	VIRGINIA'S BLUE RIDGE TWENTY24	T24
31 Helena CONEY	72. at 13"	101 Florence HOWDEN	47. at 13"	171 Marlies MEJIAS GARCIA	3. at 9"
		102 Morgan STERN	74. at 13"	172 Emily EHRlich	7. at 13"
33 Brenna WRYE-SIMPSON	18. at 13"	103 Myriam PAQUET	106. at 32'10"	173 Laurel QUINONES	54. at 13"
34 Cassidy HICKEY*	13. at 13"			174 Sofia ARREOLA NAVARRO	16. at 13"
35 Kara LILLY	105. at 29'23"	105 Leigh DUKEMAN	99. at 20'45"	175 Jennifer VALENTE	68. at 13"
36 Holly HENRY		106 Clara BROWN		176 Melisa ROLLINS	31. at 13"
37 Cassandra NELSON		107 Danielle RAVNIKAR	56. at 13"		
CYNISCA CYCLING	CYN	3T/Q+M CYCLING	XQM	GOLDMAN SACHS EFTS RACING	XGS
41 Greta RICHIOUD	10. at 13"	111 Stefanie SYDLIK	55. at 13"	181 Jane TULLIS*	
42 Pauline ALLIN	26. at 13"	112 Galen BOLARD	5. at 12"	182 Megan POULIN	
43 Ashley FRYE	49. at 13"	113 Rachel JORDAN	60. at 13"	183 Justine THOMAS*	95. at 20'11"
44 Anna HICKS	84. at 5'48"	114 Hayley WICKSTROM	57. at 13"	184 Elizabeth Katia MARTINEZ MIÑARRO*	82. at 4'54"
45 Jessica CYGAN	48. at 13"	115 Leah THORVILSON	88. at 11'05"	185 Jenna NESTMAN	70. at 13"
46 Emilie FORTIN	21. at 13"	116 Amanda BRANDYBERRY			
47 Claire WINDSOR	22. at 13"				
PRIMEAU VELO RACING TEAM	PVR	DENVER DISRUPTORS	XDD	ORION RACING P/B BORAH TEAMWEAR	XOR
51 Camille PRIMEAU*	11. at 13"	121 Leah KIRCHMAN	6. at 13"	191 Anna DOROVSKIKH	61. at 13"
52 Penelope PRIMEAU*				192 Cheyenne NOBLE	97. at 20'44"
53 Lucy HEMPSTEAD*	103. at 27'11"			193 Catherine GUENTERT	
54 Coralie LEVESQUE*	17. at 13"	124 Erica ZAVETA	66. at 13"	194 Erika WILSON	91. at 11'11"
55 Iris GABELIER*	93. at 20'11"	125 Hayley BATES		195 Marien LAWSON*	65. at 13"
56 Lilly UJFALUSI*	35. at 13"	126 Elizabeth HARDEN*	101. at 24'01"		
57 Isla WALKER*	94. at 20'11"	127 Ava HACHMANN	67. at 13"		
L39ION OF LOS ANGELES	XLA	COMPETITIVE EDGE RACING	XCE		
61 Skylar SCHNEIDER		131 Samantha SCOTT*	40. at 13"	106 riders	
62 Samantha SCHNEIDER	44. at 13"	132 Regina LEGGE	59. at 13"		
63 Renee Julyn AGUILA HERNANDEZ	30. at 13"	133 Raylyn NUSS	83. at 5'31"		
64 Aubrey DRUMMOND*	102. at 24'03"	134 Chloe PATRICK*	39. at 13"		
65 Caitlin HOWELL	77. at 4'54"	135 Lauren ZOERNER*	100. at 24'01"		
		136 Meredith MORAN	98. at 20'45"		

MOUNT SEQUOYAH ROAD RACE

WOMEN ELITE • MAY 19, 2023

GRID

05/19/2023 | Fayetteville - Devil's Den - Fayetteville






TIB	1	2	3	4	5		
4	LANGLEY E. 38. at 13"	STEPHENS L. 4. at 11"	POIDEVIN S. 25. at 13"	BANKS E. 81. at 4'54"	HONSINGER C. 27. at 13"		
DNA	11	12	13	14	15	16	17
2	POWLESS S. 8. at 13"	LANGDON R. 45. at 13"	BARRERA ESPARZA A. 33. at 13"	PEÑUELA MARTINEZ D. 23. at 13"	BRECK H. 32. at 13"	VAN DAM S.* 2. at 7"	CUMMINS O.* 80. at 4'54"
ROX	21	22	23	24	25	26	27
7	EASLER M. 20. at 13"	GONTOVA N. 69. at 13"	MARCOLINI E. 42. at 13"	NEWSOM E. 29. at 13"	BONHOMME A. 9. at 13"	HINOJOSA CRUZ R.* 28. at 13"	BEMIS M. 24. at 13"
ILP	31		33	34	35	36	37
11	CONEY H. 72. at 13"		WRYE-SIMPSON B. 18. at 13"	HICKEY C.* 13. at 13"	LILLY K. 105. at 29'23"	HENRY H.	NELSON C.
CYN	41	42	43	44	45	46	47
8	RICHIOUD G. 10. at 13"	ALLIN P. 26. at 13"	FRYE A. 49. at 13"	HICKS A. 84. at 5'48"	CYGAN J. 48. at 13"	FORTIN E. 21. at 13"	WINDSOR C. 22. at 13"
PVR	51	52	53	54	55	56	57
9	PRIMEAU C.* 11. at 13"	PRIMEAU P.*	HEMPSTEAD L.* 103. at 27'11"	LEVESQUE C.* 17. at 13"	GABELIER I.* 93. at 20'11"	UJFALUSI L.* 35. at 13"	WALKER I.* 94. at 20'11"
XLA	61	62	63	64	65		
1	SCHNEIDER S. ★	SCHNEIDER S. 44. at 13"	AGUILA HERNANDEZ R. 30. at 13"	DRUMMOND A.* 102. at 24'03"	HOWELL C. 77. at 4'54"		
XUC	71	72	73	74	75	76	77
14	AMAN K. 37. at 13"	SCHUETTER S. 85. at 7'44"	DALSING H. 52. at 13"	MACROSTIE M. 53. at 13"	MCCUDDEN S.* 92. at 11'59"	CONYERS C. 43. at 13"	CLAY Z. 90. at 11'10"
XMN	81	82	83	84	85		
10	BUTTINE A. 12. at 13"	CYR A. 76. at 4'54"	GARCIA BUITRAGO D. 58. at 13"	KUYK-WHITE T. 14. at 13"	PRADERA BERNAL J. 36. at 13"		
XCA	91	92	93	94	95		
13	SEILER K.* 63. at 13"	GUNSALUS E.* 79. at 4'54"	HASSE B.* 71. at 13"	QUINN N.* 19. at 13"	RUSCH K. 41. at 13"		
XCC	101	102	103		105	106	107
17	HOWDEN F. 47. at 13"	STERN M. 74. at 13"	PAQUET M. 106. at 32'10"		DUKEMAN L. 99. at 20'45"	BROWN C.	RAVNIKAR D. 56. at 13"
XQM	111	112	113	114	115	116	
5	SYDLIK S. 55. at 13"	BOLARD G. 5. at 12"	JORDAN R. 60. at 13"	WICKSTROM H. 57. at 13"	THORVILSON L. 88. at 11'05"	BRANDYBERRY A.	
XDD	121			124	125	126	127
6	KIRCHMAN L. 6. at 13"			ZAVETA E. 66. at 13"	BATES H.	HARDEN E.* 101. at 24'01"	HACHMANN A. 67. at 13"
XCE	131	132	133	134	135	136	
15	SCOTT S.* 40. at 13"	LEGGE R. 59. at 13"	NUSS R. 83. at 5'31"	PATRICK C.* 39. at 13"	ZOERNER L.* 100. at 24'01"	MORAN M. 98. at 20'45"	
XFC	141		143	144	145	146	
12	RINALDO M. 86. at 11'04"		SCHUGAR S. 75. at 4'39"	SHAFI A. 15. at 13"	WHEELER J.	GAMMELGARD A. 34. at 13"	
XCY	151	152	153	154		156	
16	SCOTT A.*	SURGENOR W. 104. at 29'21"	LEBRETON M.* 46. at 13"	TOMPKINS T.* 51. at 13"		GOUDSWAARD S. 50. at 13"	
XAD	161	162	163	164	165	166	167
19	CAMARGO SANTACANA M. 62. at 13"	PARKER R. 96. at 20'42"	HALAMEK S. 73. at 13"	BOND K.* 89. at 11'07"	LIN K. 87. at 11'05"	FERREIRA C. 64. at 13"	RUBINO R. 78. at 4'54"
T24	171	172	173	174	175	176	
3	MEJIAS GARCIA M. 3. at 9"	EHRlich E. 7. at 13"	QUINONES L. 54. at 13"	ARREOLA NAVARRO S. 16. at 13"	VALENTE J. 68. at 13"	ROLLINS M. 31. at 13"	
XGS	181	182	183	184	185		
20	FULLIS J.*	POULIN M.	THOMAS J.* 95. at 20'11"	MARTINEZ MIÑARRO E.* 82. at 4'54"	NESTMAN J. 70. at 13"		
XOR	191	192	193	194	195		
18	DOROVSKIKH A. 61. at 13"	NOBLE C. 97. at 20'44"	GUENTERT C.	WILSON E. 91. at 11'11"	LAWSON M.* 65. at 13"		

106 riders

MOUNT SEQUOYAH ROAD RACE
WOMEN ELITE • MAY 19, 2023

TEAM CAR ORDER

05/19/2023 | Fayetteville - Devil's Den - Fayetteville

1	L39ION OF LOS ANGELES		XLA
2	DNA PRO CYCLING		DNA
3	VIRGINIA'S BLUE RIDGE TWENTY24		T24
4	EF EDUCATION - TIBCO - SVB		TIB
5	<i>3T/Q+M CYCLING (no car)</i>		<i>XQM</i>
6	DENVER DISRUPTORS		XDD
7	ROXO RACING		ROX
8	CYNISCA CYCLING		CYN
9	PRIMEAU VELO RACING TEAM		PVR
10	MIAMI NIGHTS		XMN
11	INSTAFUND RACING		ILP
12	FOUNT CYCLING GUILD		XFC
13	CCB - ALPINE CARBON P/B LLG		XCA
14	UNITED CYCLING		XUC
15	COMPETITIVE EDGE RACING		XCE
16	<i>THE CYCLERY RACING (no car)</i>		<i>XCY</i>
17	CARDINAL - CLASSIC CYCLING		XCC
18	<i>ORION RACING P/B BORAH TEAMWEAR (no car)</i>		<i>XOR</i>
19	AMY D FOUNDATION		XAD
20	GOLDMAN SACHS EFTS RACING		XGS